



Pacific Series - Heavy Glass Enclosures

3/8" glass thickness

Wall-Mount, Pivot, or Glass-to-Glass door hinges

Through-glass handles

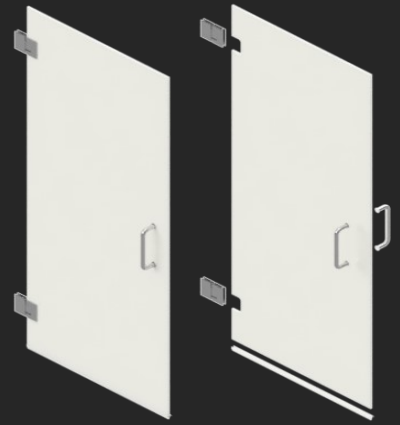
Panels mounted with channel or clamps



Wall-Mount Door



Pivot Door



Glass-to-Glass Door

Atlantic Series - Framed Enclosures

1/4" or 3/16" glass thickness

Doors can be Framed, Semi-Frameless (w/ edge-mount handle) or Semi-Frameless (w/ through-glass handle)

Panels are framed in aluminum



Framed Door



*Semi-Frameless w/Edge-Mount
Handle*



*Semi-Frameless w/ Through-Glass
Handle*



Atlantic Series - Panoramic Door and Panel

1/4" glass thickness

Semi-frameless door

Metal between door and inline panel replaced w/ clear poly

Panels are framed in aluminum



With Middle Strike



With Upper Strike

Atlantic Series - Hybrid Door and Panel

1/4" and 3/8" glass thickness

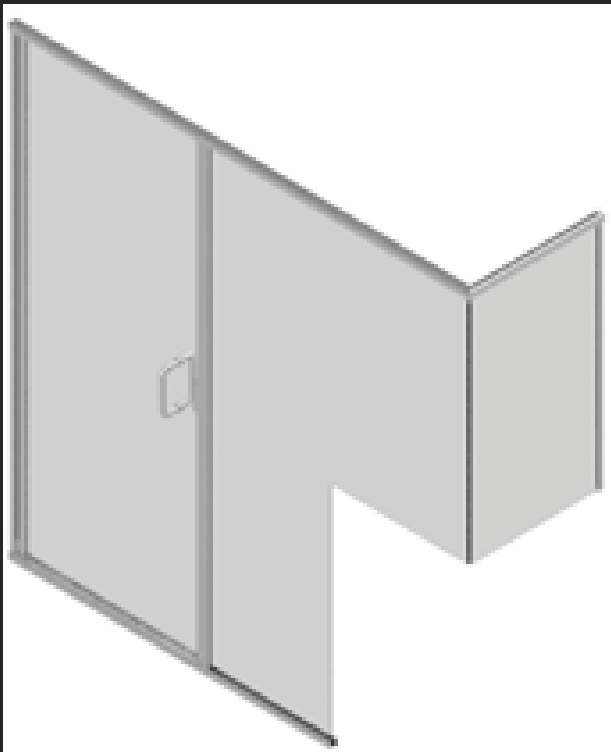
Semi-Frameless Door

Panels are 3/8" glass set in channel





Understanding Specialized Layouts



Specialty Notch Panel Condition

Formerly known as “Mungo Layout”

- *No threshold metal on notch rise*
- *No threshold metal on buttress*
- *No threshold metal on return panel*
- *Aquarium corner (no metal between panel glass)*
- *Semi-frameless door with C-Pull Handle*



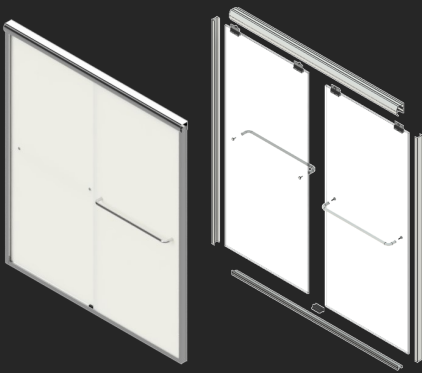
Gulf Series - Bypass Enclosures

Sliding glass doors

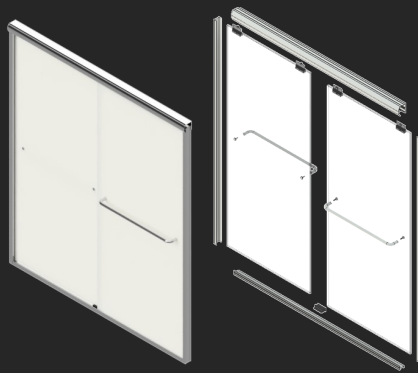
3/8", 1/4", or 3/16" glass thickness

Bypasses can be Semi-Frameless 3/8", Semi-Frameless 1/4", or Framed

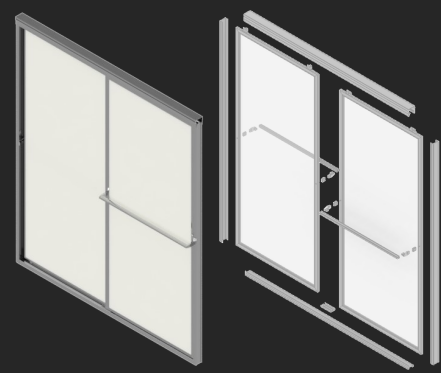
Towel bars used as handles



Semi-Frameless 3/8"



Semi-Frameless 1/4"



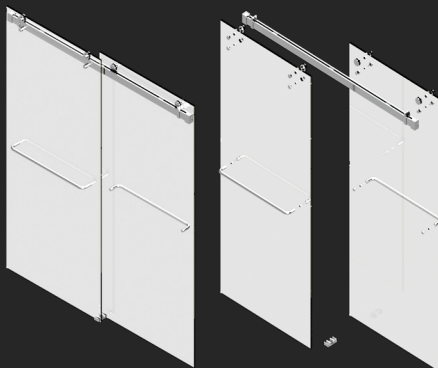
Framed Bypass

Gulf Series - Specialty Bypasses

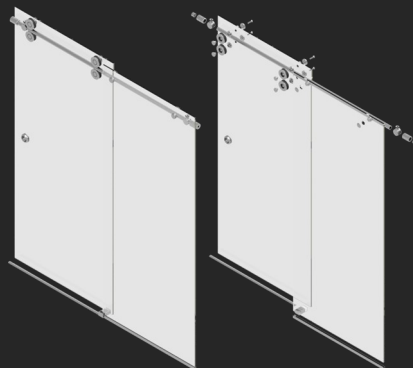
DuoGlide: Both doors slide on a roller bar, finger-pull handles

Euroglide: Large, exposed rollers, one sliding door and one fixed panel, finger-pull handle

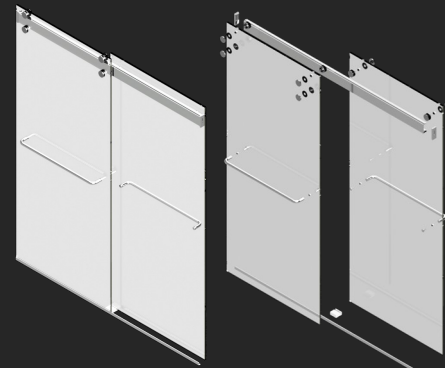
Duet: Both doors slider on a roller bar, towel bar handles



DuoGlide



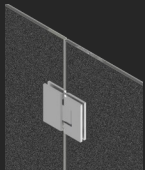
Euroglide



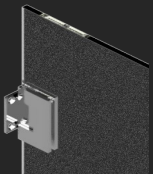
Duet



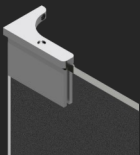
Understanding Types of Hinges



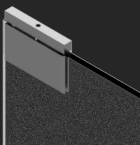
Glass-to-Glass



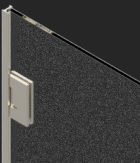
Glass-to-Wall



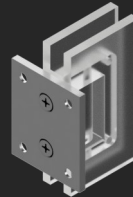
Pivot-to-Wall



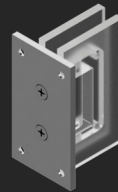
Pivot-to-Header



Jamb-Mount



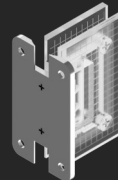
Short Plate



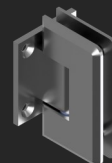
Full Plate



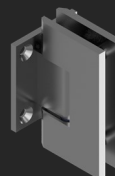
Offset Plate



H-Back Plate



Beveled

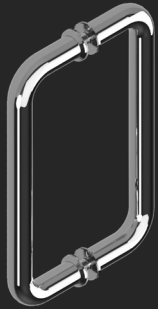


Squared
(Non-Beveled)

Adjustable: Hinges feature an Allen screw adjustment that allows the door to return to a custom-set closing angle.



Understanding Types of Handles



C-Pull Handle



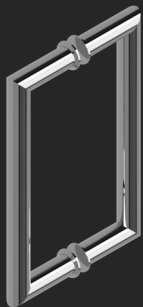
Ladder-Pull Handle



Arch Handle



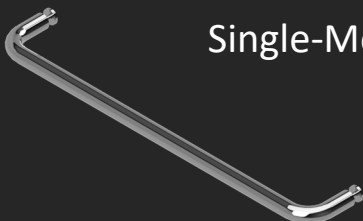
Traditional Handle



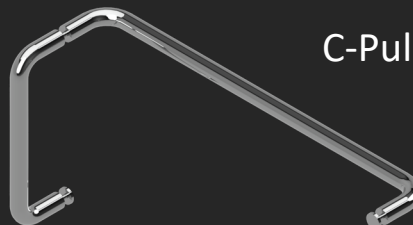
Mitered Handle
(Round)



Mitered Handle
(Square)



Single-Mount Towel Bar

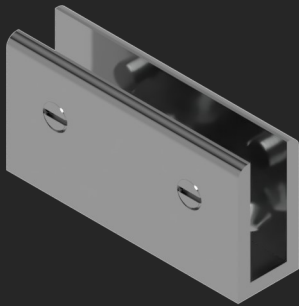


C-Pull / Towel Bar Combo

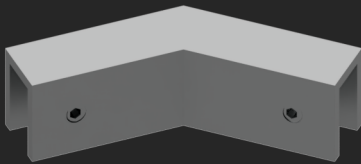


Understanding Types of Clips and Clamps

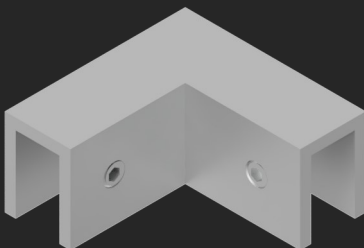
Clips - No Fabrication Required



Glass Clip

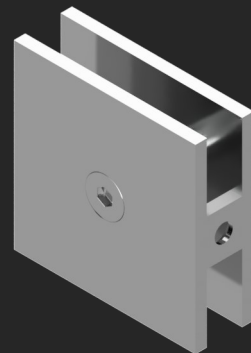


135-deg Sleeve-Over Clip

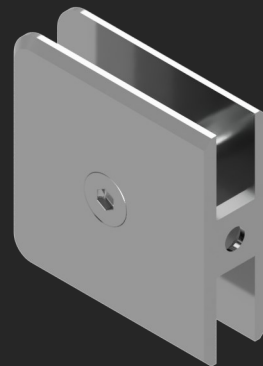


90-deg Sleeve-Over Clip

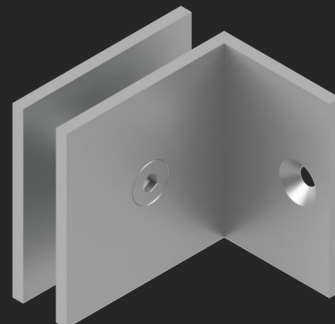
Clamps - Glass Fabrication Required



Square Glass Clamp



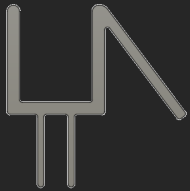
Beveled Glass Clamp



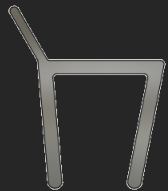
Glass-to-wall Clamp



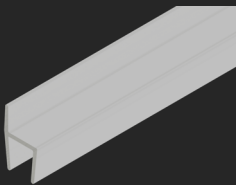
Understanding Types of Polycarbonate



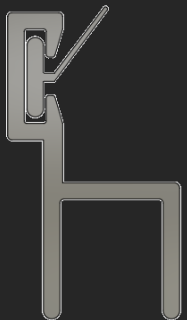
Drip Cap



3/8" Wall Seal (M-P-SW38)



3/8" Strike Hard-H (M-P-38HJ)



*3/8" Strike 180 Removeable
Fin (M-P-1/2x1/2-98)*



L-Angle Striker 1/2" x 1/2" (M-P-1/2x1/2-98)