

*The Quality Collection*



## ***Wall-Mount Hinges***

*The cornerstone of many shower enclosures, wall-mount hinges are key pieces that allow your door to operate smoothly for years to come.*

*Wall-mount hinges share a common set of features: they fasten securely to solid-backed surfaces, have flexibility and adjustment, and can offer classic, enduring style.*

*Whether you're building an elaborate multi-panel enclosure or just a single door, wall-mount hinges provide safety and peace of mind every time.*





### Full Plate Glass-to-Wall

Features include:

**Deluxe** (80 lb./28" W max\*)  
Centerline Closing  
Squared Edges  
Cutout Template **D**

**Heavy Duty** (110 lb./36" Width\*\*)  
Centerline Closing  
Squared Edges  
Cutout Templates **M, B**



### Short Plate Glass-to-Wall

Features include:

**Deluxe** (80 lb./28" W max\*)  
Centerline or Adjustable 0-5° Closing  
Squared Edges  
Cutout Template **K**

**Heavy Duty** (110 lb./36" Width\*\*)  
Centerline or Adjustable 0-5° Closing  
Squared Edges  
Cutout Templates **A, R**



### Offset Plate Glass-to-Wall

Features include:

**Deluxe** (80 lb./28" W max\*)  
Centerline Closing  
Squared Edges  
Cutout Template **D**

**Heavy Duty** (110 lb./36" Width\*\*)  
Centerline Closing  
Squared Edges  
Cutout Template **A**



### H-Back Plate Glass-to-Wall

Features include:

**Deluxe** (80 lb./28" W max\*)  
Centerline Closing  
Beveled Edges  
Cutout Template **M**

**Heavy Duty** (110 lb./36" Width\*\*)  
Adjustable 0-5° Closing  
Beveled Edges  
Cutout Template **A, R**



\*Maximum door weight with two hinges/maximum door width

\*\*Manufacturer recommends a maximum door width of 32" to avoid possible stress on tile/marble/glass/etc."

S - Silver • BN - Brushed Nickel • OB - Oil Rubbed Bronze • MB - Matte Black • PN - Polished Nickel

Fabrication Cutouts- See Page 15





## ***Pivot Hinges***

*When mounting doors into ceilings or headers, pivot hinges are often the best and most functional choice.*

*With a sleek, modern design, pivot hinges function in a way that enhances the entire visual presentation of an enclosure while keeping sight-lines uninterrupted.*

*Pivot hinges have the additional benefit of supporting more weight than many other hinges, allowing bold, wide doors that sit seamlessly between panels.*





### **Pivot-to-Curb**

Features include:

**Deluxe** (100 lb./31" W max\*)

Self-centering

Beveled Edges

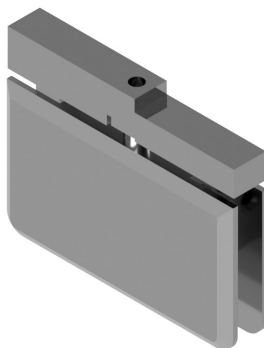
Cutout Template **E**

**Heavy Duty** (120 lb./32" Width\*)

Self-closing from 25°

Beveled or Squared Edges

Cutout Template **H**



### **Pivot-to-Header**

Features include:

**Deluxe** (100 lb./31" W max\*)

Self-centering

Beveled Edges

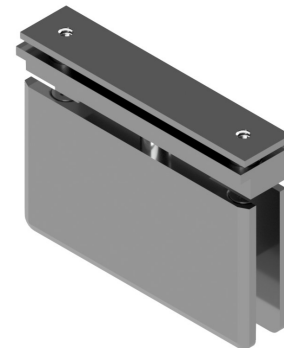
Cutout Template **E**

**Heavy Duty** (120 lb./32" Width\*)

Self-closing from 25°

Beveled or Squared Edges

Cutout Template **H**



### **Easy-Lock Pivot-to-Header**

Adapter block allows for simple installation through Easy-Lock header system.

(100 lb./31" W max\*)

Beveled Edges

Cutout Template **E**

Compatible with Pivot-to-Curb



\*Maximum door weight with two hinges/maximum door width

S - Silver • BN - Brushed Nickel • OB - Oil Rubbed Bronze

Fabrication Cutouts- See Page 15



## ***Glass-to-Glass Hinges***

*Glass-to-glass hinges are another tool used to facilitate a vision of continuous glass panels.*

*Glass-to-glass hinges mount doors directly to glass panels with precision and execution that ensures smooth, reliable function time after time.*







### **Glass-to-Glass 180° Hinge**

*Features include:*

**Deluxe** (80 lb./28" W max\*)

Adjustable 0-5° Closing

Squared Edges

Cutout Template **D**

**Heavy Duty** (110 lb./36" Width\*\*)

Centerline Closing

Squared Edges

Cutout Template **M**



### **Glass-to-Glass 90° Hinge**

*Features include:*

**Deluxe** (80 lb./28" W max\*)

Adjustable 0-5° Closing

Squared Edges

Cutout Template **D**

**Heavy Duty** (110 lb./36" Width\*\*)

Centerline Closing

Squared Edges

Cutout Template **M**



### **Glass-to-Glass 135° Hinge**

*Features include:*

**Deluxe** (80 lb./28" W max\*)

Adjustable 0-5° Closing

Squared Edges

Cutout Template **D**

**Heavy Duty** (110 lb./36" Width\*\*)

Centerline Closing

Squared Edges

Cutout Template **M**



\*Maximum door weight with two hinges/maximum door width

\*\*Manufacturer recommends a maximum door width of 32" to avoid possible stress on tile/marble/glass/etc.

S - Silver • BN - Brushed Nickel • OB - Oil Rubbed Bronze

Fabrication Cutouts- See Page 15



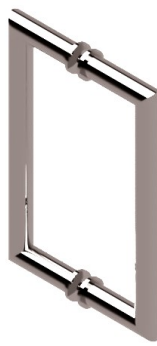
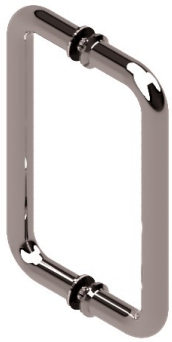
## ***Handles***

*Handles are a key component to the overall design of an enclosure. Whether it's a choice of simple function or bold flair, every handle we offer makes an impact.*

*When space allows, towel bars and pull handle/towel bar combinations can be used to provide enhanced, dual purpose functionality.*







**C-Pull**  
6" or 8" Mounting Options



**H-Pull / Ladder Pull**  
8" or 12" Mounting Option



**Mitered Round Pull**  
8" Mounting Option



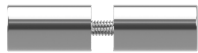
**Square Pull**  
8" Mounting Option



**Traditional Pull**  
8" Mounting Option



**Arch Pull**  
8" Mounting Option



**Standard Back-to-Back Knob**



**Hockey Puck-style Finger Pull**



**Standard Towel Bar**  
18" or 24" Hole Spread



**Standard Back-to-Back Towel Bar**  
24" Hole Spread



**C-Pull/Towel Bar Combination**  
8" Handle with 20" Towel Bar





## ***Clips, Clamps, and Channels***

*We offer a wide array of parts for all types of applications. Every item is tested and has proven to meet or exceed industry standards for strength, durability, and aesthetic presentation.*

*Clamps are a perfect intersection of design and function that require glass fabrication. Clamps add safety in the form of increased stability as well as an enhanced visual impression regardless of their configuration.*

*Sleeve-over clips help create a finished enclosure that can remain sturdy for decades. Clips do not require glass fabrication.*

*U-channel is an excellent, unobtrusive mounting point without the requirement of glass fabrication.*

*We also keep several shapes of polycarbonate strikers and sweeps in stock and ready to ship - ask us about availability of these items.*



## Glass-to-Wall Clamps and Clips



Square  
Glass-to-Wall Clamp



Beveled  
Glass-to-Wall Clamp



Glass-to-Wall  
Clamp with Leg



90° Glass-to-Glass  
Clamp

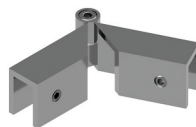
## Sleeve-Over Clips



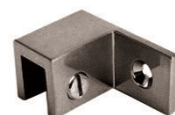
90 Degree  
Sleeve-Over Clip



135 Degree  
Sleeve-Over Clip



Adjustable  
Sleeve-Over Clip



Wall-Mount  
Sleeve-Over Clip (L or R)

## Channel, Header, Brackets, Poly



90 Degree  
Header Bracket



135 Degree  
Header Bracket



ADJ Degree  
Header Bracket



Header-to-Wall Brackets

## Extrusion



No Fab Clip  
Available with and  
without set screws



Header



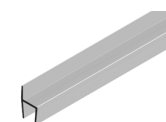
U-channel



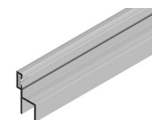
## Polycarbonate



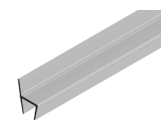
3/8" Glass Door Sweep



3/8" Strike Hard-H



3/8" Poly Strike 180°  
(removable fin)



3/8" Wall Seal

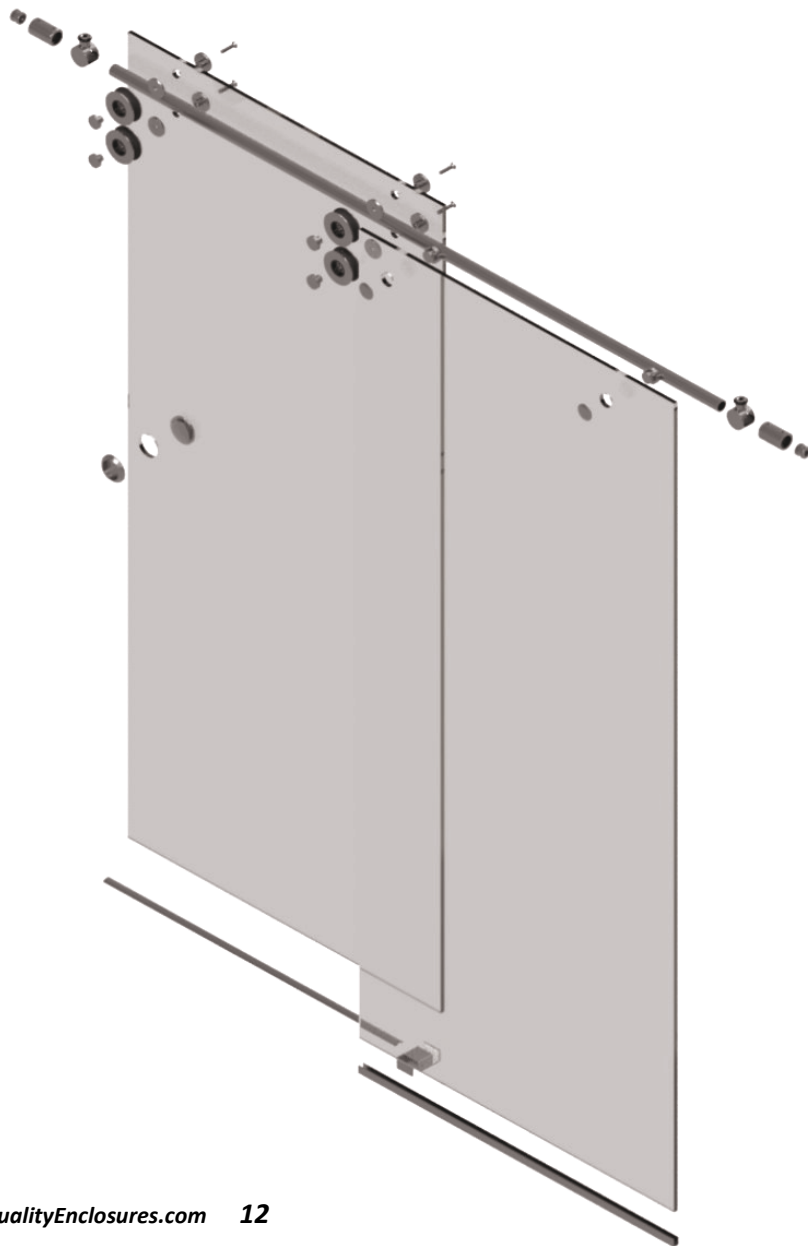


L-Angle Striker  
1/2"x1/2" w/Tape

A note about hardware terminology: "Clamps" require glass fabrication, "clips" do not.

S - Silver • BN - Brushed Nickel • OB - Oil Rubbed Bronze • MB - Matte Black • PN - Polished Nickel





## ***Euroglide Kits***

*With their distinctive large rollers and elegant rod design, Euroglides are sliding glass enclosures with a single fixed panel that offer a sophisticated design.*

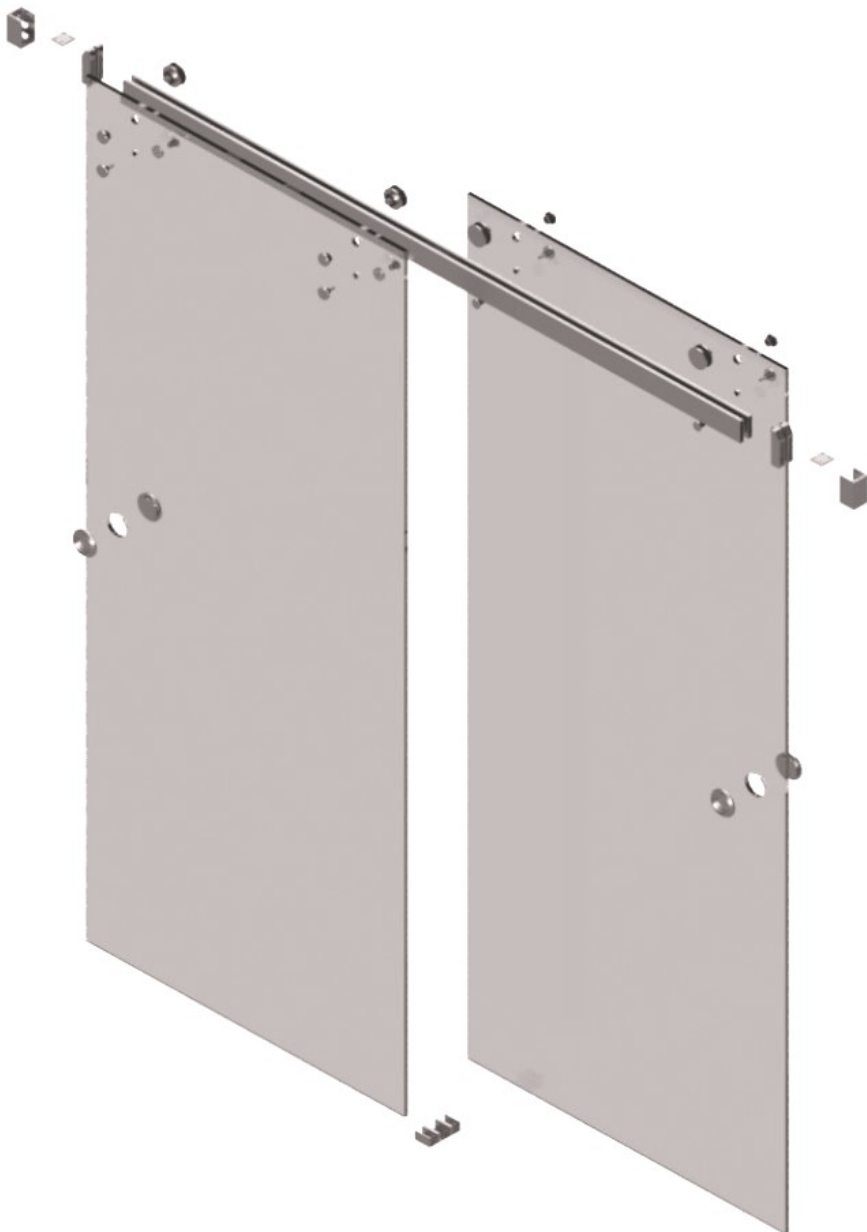
*Our complete assembly kit allows accurate, reliable installation for a wide variety of widths and heights.*



*Includes rail system and hardware kit packaged separately.  
Kit does not include glass.*

*S - Silver • BN - Brushed Nickel*

*OB - Oil Rubbed Bronze • MB - Matte Black*



## ***DuoGlide Kits***

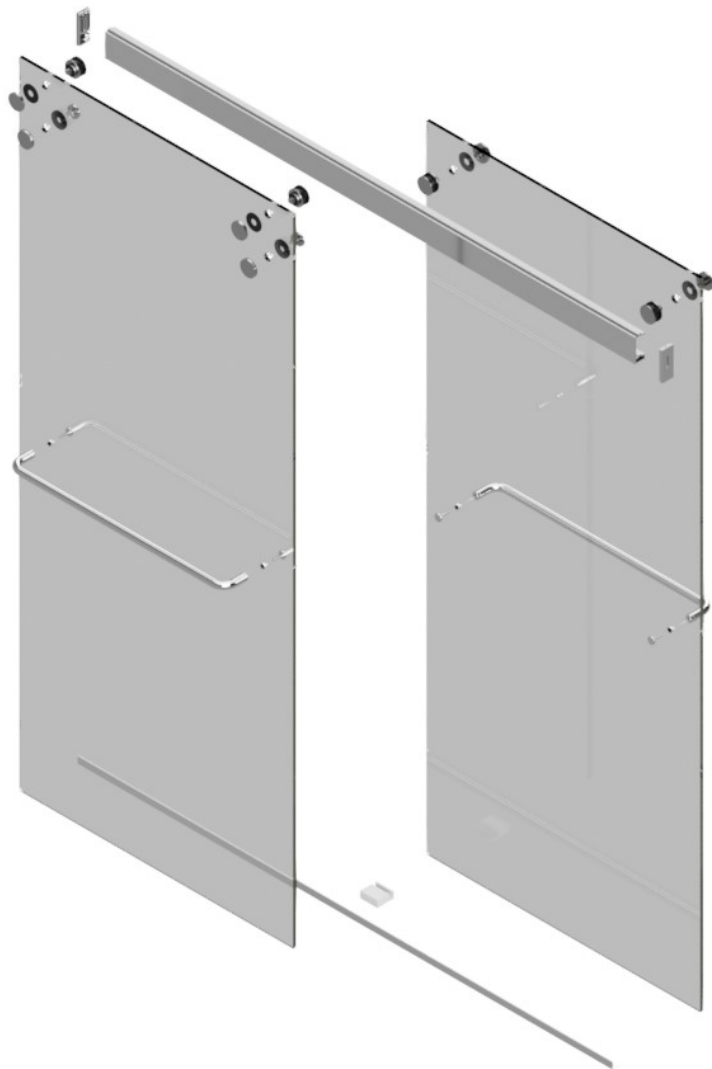
*Our DuoGlide sliding glass bypasses feature a bold, modern design and two sliding doors for increased accessibility.*

*Our complete stainless steel assembly kit allows accurate, reliable installation for a wide variety of widths and heights.*



*Includes rail system and hardware kit packaged separately. Kit does not include glass.*

*S - Polished Silver • BN - Brushed Nickel • OB - Oil Rubbed Bronze*



## ***Duet Bypass Kits***

*Our Duet kits feature a uniquely designed header system that enables both doors to slide seamlessly.*

*Our complete assembly kit allows accurate, reliable installation for a wide variety of widths and heights. These kits can accommodate 3/8" or 1/4" thick glass.*

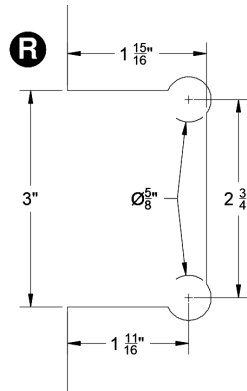
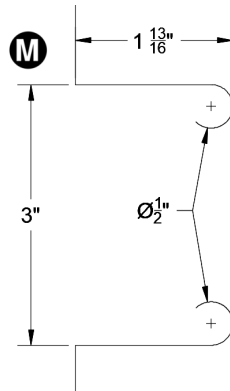
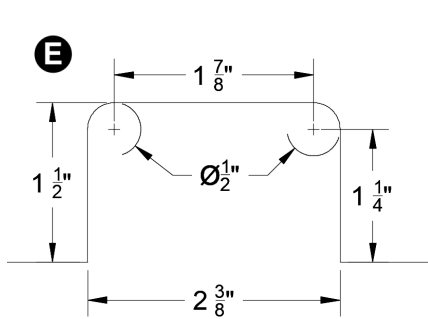
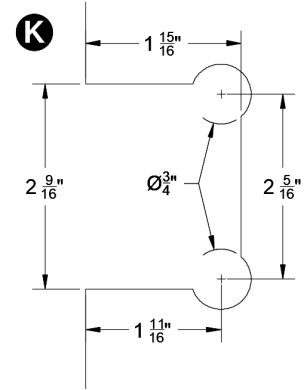
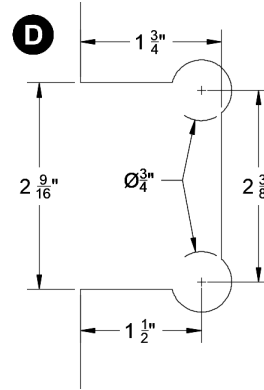
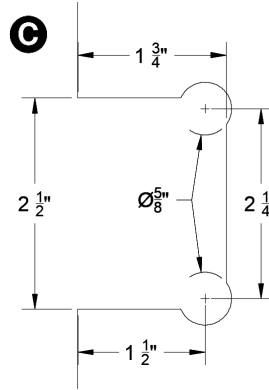
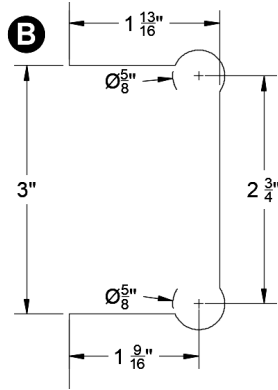
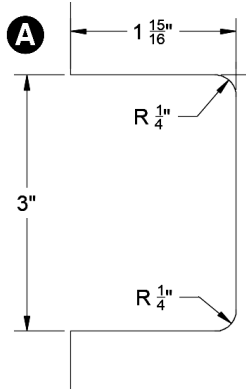


*Includes rail system and hardware kit packaged separately.  
Kit does not include glass.*

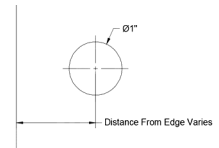
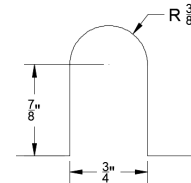
*S - Silver • BN - Brushed Nickel*



## Hinge Fabrication



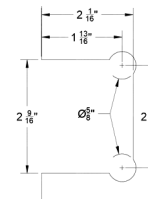
## Clamp Fabrication



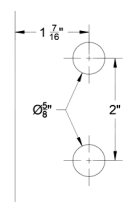
## Panel Fabrication - Glass to Glass Hinges



1. Deluxe GTG 90°



2. Deluxe GTG 135°



3. Heavy Duty GTG 90°

Colors in this document are intended to be a representation and may differ from the actual color/texture of the physical product. This catalog is not intended to reflect the complete product line of Quality Enclosures, Inc. but rather feature our most popular hardware products. Please contact your Customer Service Representative for a full line of options and available hardware. Availability and matching fabrication may vary with selected features. Color availability may vary depending on options chosen. Contact your Customer Service Representative for full details. Availability subject to change without notice.



### *The Quality Way*

*Quality Enclosures is a vertically-integrated manufacturer with state-of-the-art fabrication, welding, powder-coating, machining, and finishing facilities that allow us to offer hardware for thousands of variations of enclosures.*

*In 1963, our founder Manny Schwartz created a company based on family traditions and values. Today we are proud to say we are still family-owned and operated and manufactured in the U.S.A.*

*View more products and video demonstrations at:*

*[www.QualityEnclosures.com](http://www.QualityEnclosures.com)*